

☐ Enquiry ☐ Order

Reference no. (Customer):

Customer no.:		Order address:	
Customer:			
Contact person:		Delivery address:	
Telephone:			
E-mail:		Requested delivery date:	

Edscha SB-Profi Roof

Basic roof*

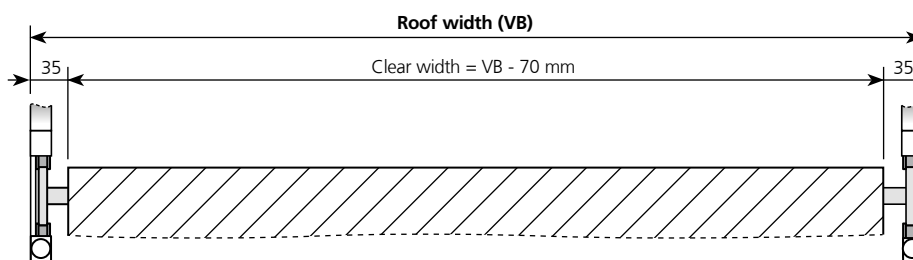
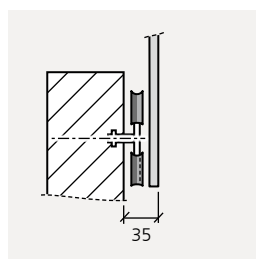
☐ **Basic roof
SB-Profi Standard**
(see page 7)

☐ **Basic roof
SB-Profi Volume**
with additional folding
brackets (see page 7)
suitable for optimised loading height

Quantity of roofs with
identical parameters

Piece

Roof length (VL): m
(see page 8, for options
see page 14 + 15)

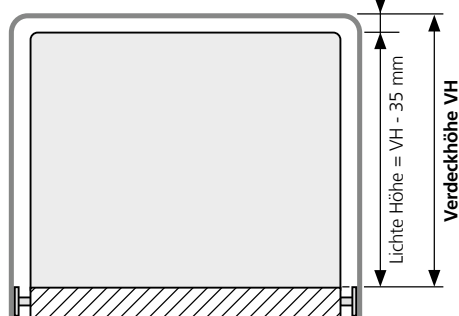


Roof width (VB)*: mm

* Specifications from 2350 - 2700 mm possible in 50 mm steps (clear width: 2280 - 2630 mm)

Roof height (VH)*: mm

* Specifications from 2250-3200 mm possible in 50 mm steps (clear height: 2215 - 2965 mm).
VH must be 10 mm less than the existing end wall height.



Made from standard parts with adaptation of the rainwater drainage
channel set for the end wall by the customer.

Requirements for the end wall can be found in the installation
instructions!

* Scope of delivery as described in the brochure under "Basic roof"

Options

Vehicle/platform

- ☐ **Roof for open platform SB-Profi**
(for vehicles without end walls)
- ☐ **Roof for closed platform SB-Profi**
(for vehicles with end walls on both sides)

End carriage

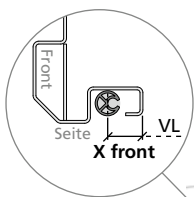
- ☐ **Small end carriage 250 mm long, without locking for
front installation** (requires end wall at the front)
- ☐ **Small end carriage 250 mm long, without locking for
rear installation** (requires end wall at the rear)

Options

Define the distances between the customer's existing clamping tube systems on the end walls

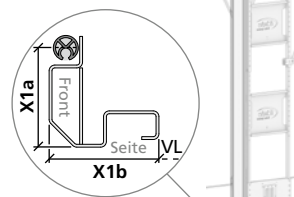
End wall – front

Lateral
tensioning tube



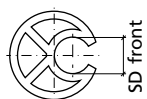
X Front = mm

Tensioning tube
at the front



X Front =
(X1a + X1b) mm

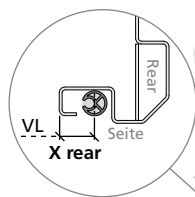
Keder diameter in tensioning tube front



SD front = mm

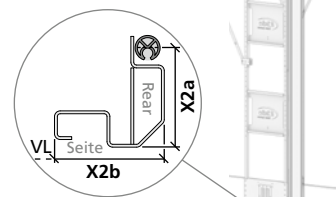
End wall – rear

Lateral
tensioning tube



X Rear = mm

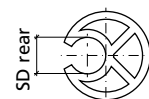
Tensioning tube
at the rear



X Rear =
(X2a + X2b) mm

Keder diameter in tensioning tube rear

SD rear = mm



Alternative rail systems

- ☐ **Edscha TS rail system for running rails 2 m (segments)** – not 37.5 mm hole stitch
- ☐ **Customer specific rail system** (customized running rail system only possible for large series)

Tarpaulins

- ☐ **Optionally available, different color for side cover (not RAL 7035)** (not RAL 7035) Color 01 to Color 48 possible, see page 12
- Side tarpaulin left – color number, Color: Side tarpaulin right – color number, Color:

Digital print on both sides and rear

Number of attachments: File name (incl. suffix)

- ☐ **Side tarpaulin left:** _____ / ☐ also for side tarpaulin right
- ☐ **Side tarpaulin right:** _____
- ☐ **Rear Tarpaulin** _____

Conventional lettering: ☐ left side ☐ right side ☐ rear

- ☐ **Without tarpaulins** Caution: Loss of warranty on function and durability!

File formats bitmaps:

- TIFF file (without compression)
- JPG file (without compression)
- EPS file

File formats layout data:

- Adobe Illustrator
- Adobe InDesign
- CorelDraw (up to vers. 21 - 2019)
- PDF (PDF/X-4)

Optional accessories

- ☐ **Sealing tape between rails & chassis, 5 m roll**
- ☐ **Softdoor kit with sling lock for roofs without tarpaulin**